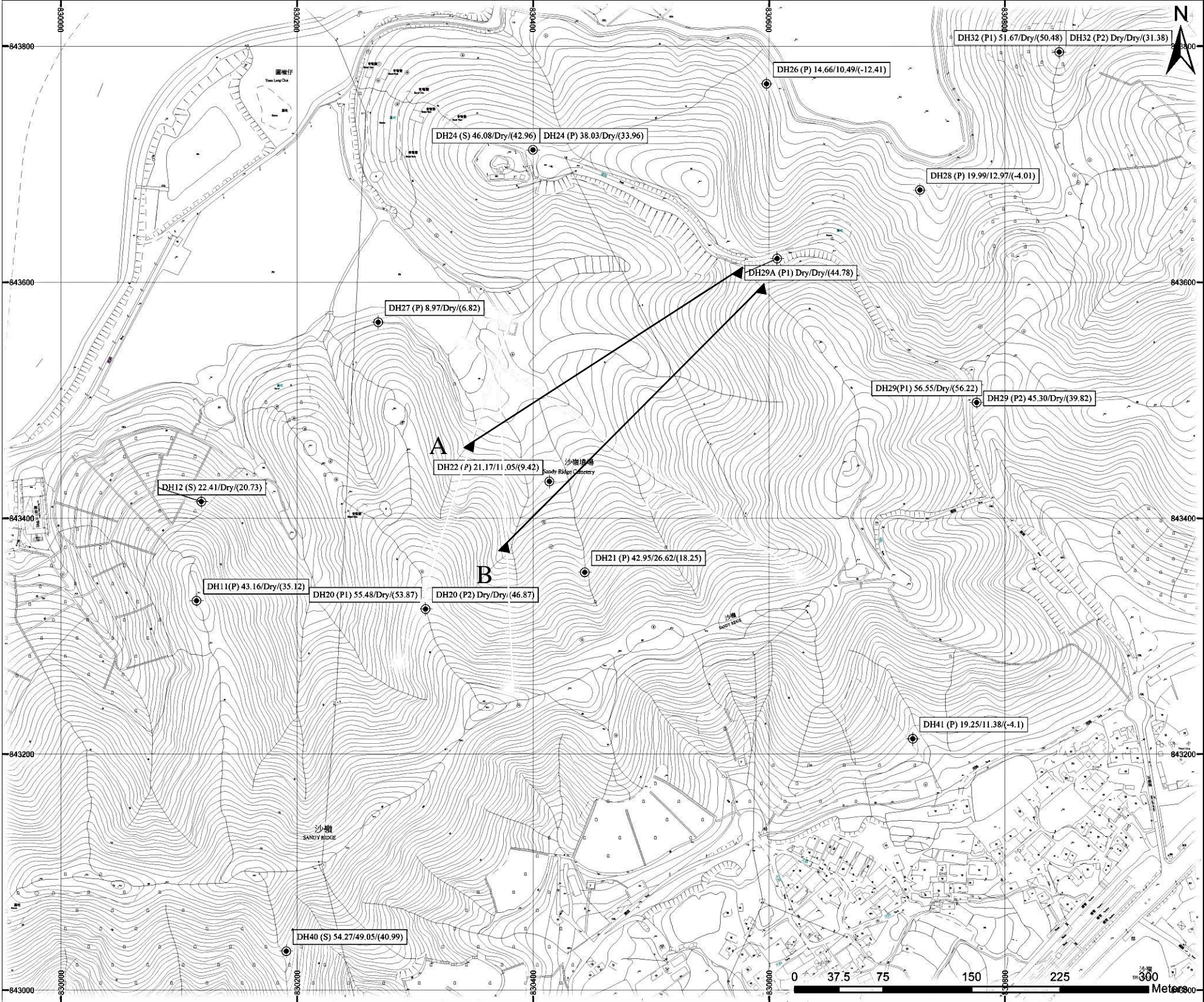


Appendix 6.2

Existing Groundwater Profile

Location Plan for Groundwater Monitoring Stations

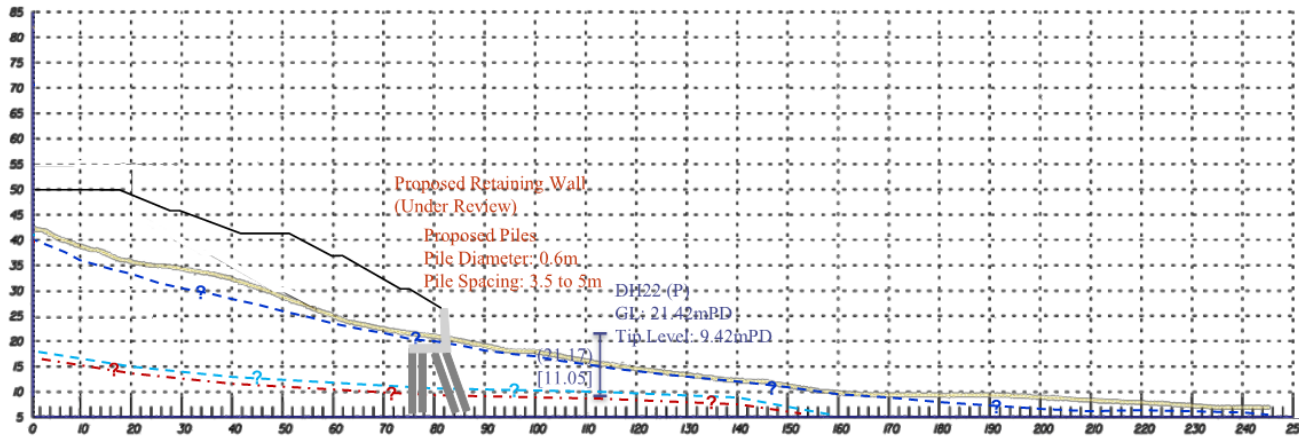


Legend

DH28(P) 19.99/12.97/(-4.01)

Ground monitoring station	Max water level recorded during wet season (mPD)	Min water level recorded during dry season (mPD)	Tip level of Standpipe/Piezometer (mPD)
---------------------------	--	--	---

Section A-A



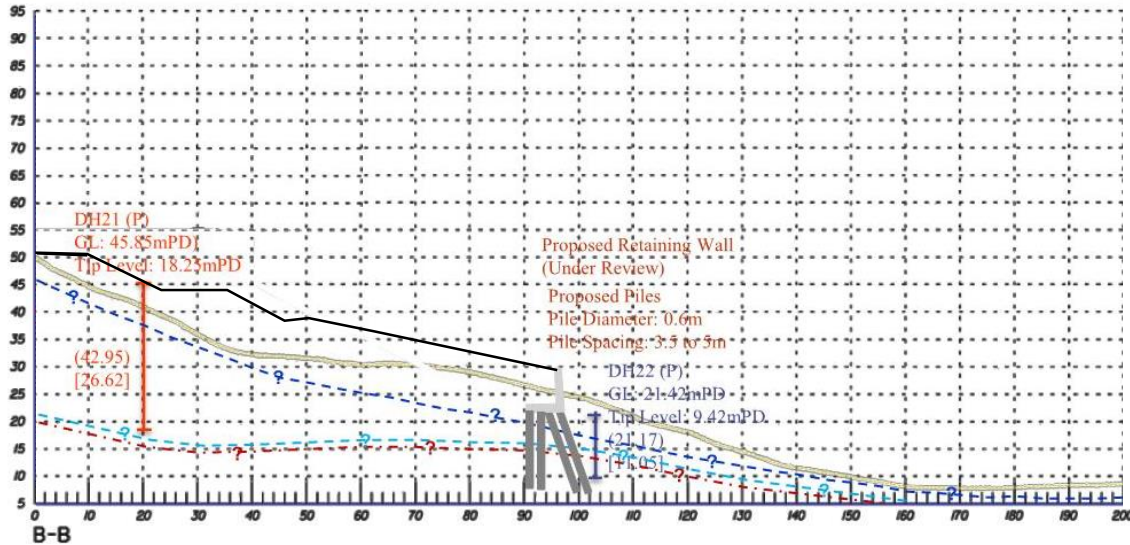
Remarks:

1. The groundwater monitoring data referred to are from previous stage GI only and the hydrogeological model will be refined and updated upon completion of current GI.
2. Groundwater monitoring data are recorded from Feb 2012 to Aug 2012 and from Aug 2013 to Feb 2014 only. More data will be obtained in the detailed design stage to verify the ground condition and the hydrogeological model will be updated in the detailed design.

Legend:

- Existing Ground Profile
- Future Site Formation Profile (under review)
- ?-?-? Inferred Engineering Rockhead Profile
- ?-? Inferred Max. Groundwater Profile (measured during wet season)
- ?-? Inferred Mean Groundwater Profile (measured during wet season)
- Standpipe/Piezometer
- () Measured Max. groundwater level during wet season
- [] Measured Min. groundwater level during dry season
- Tip of Groundwater Monitoring Device

Section B-B



Remarks:

1. The groundwater monitoring data referred to are from previous stage GI only and the hydrogeological model will be refined and updated upon completion of current GI.
2. Groundwater monitoring data are recorded from Feb 2012 to Aug 2012 and from Aug 2013 to Feb 2014 only. More data will be obtained in the detailed design stage to verify the ground condition and the hydrogeological model will be updated in the detailed design.

Legend:

- Existing Ground Profile
- Future Site Formation Profile (under review)
- ? - ? - Inferred Engineering Rockhead Profile
- - ? - - Inferred Max. Groundwater Profile (measured during wet season)
- - ? - - Inferred Mean Groundwater Profile (measured during wet season)
- Standpipe/Piezometer
- () Measured Max. groundwater level during wet season
- [] Measured Min. groundwater level during dry season
- Tip of Groundwater Monitoring Device